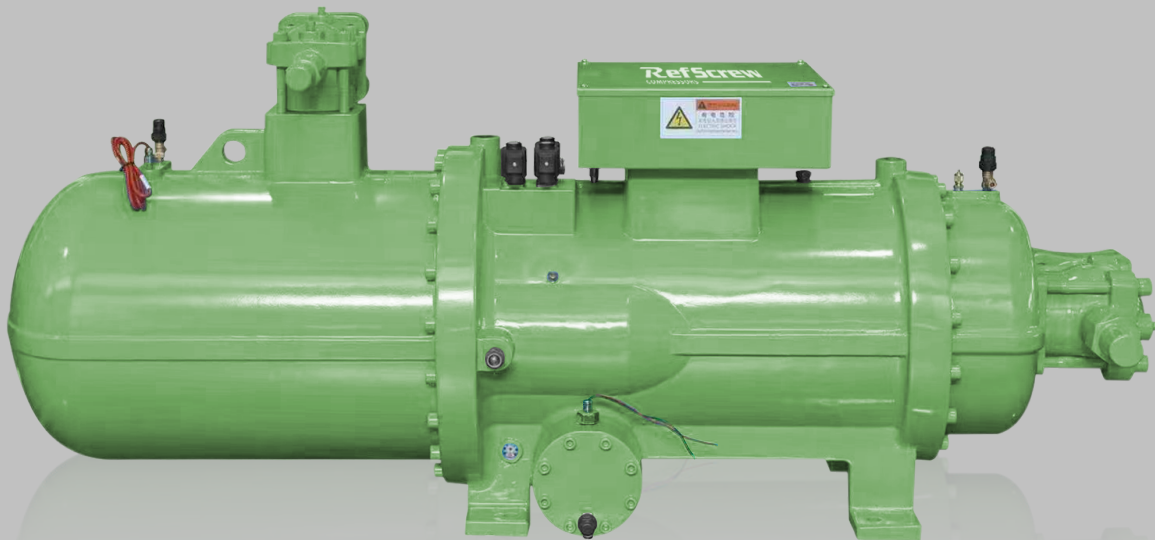


RefScrew
COMPRESSORS

Building Your Trust In Compressor

RefScrew CW/CVW Series Screw Compressor



SCREW COMPRESSOR

致力于成为世界级品牌压缩机制造商

To Be Reliable World-Class Well-Known Compressor Manufacturer



致力于成为世界级品牌压缩机制造商

To Be Reliable World-Class Well-Known Compressor Manufacturer

Content	Page	内容	页数
The Special Highlights	1	卓越的特性	1
Type Designation	2	型号说明	2
Technical Data & Application Limits	3	技术参数及应用范围	3
Performance Data R134a	4-8	性能参数 R134a	4-8
Lubricants	8	润滑油	8
Dimensional Drawings	9-15	外形尺寸	9-15
Accessories	15	配置清单	15

The Special Highlights

- Variable-Conversion**
Variable frequency models have simple speed regulation and can realize soft start and smooth stop.
- Energy Efficient**
High -precision processing parts, high -precision bearings, advanced screw lines, etc. to ensure efficient compressor.
- Machinery Structure**
The machine design is reasonable, the structure is compact, and the use of small space is small.
- Mute Design**
A reasonable airflow layout, the screw rotates smoothly, and the compressor is low vibration and low noise during operation.
- Wide Application Field**
"Suitable for: industrial refrigeration, ship refrigeration, freezing refrigeration, freezing dryer, ice making machine, Drying equipment, heating system, fast frozen food, etc."
- Quality Assurance**
All refrigeration compressor products are tested and can be used after installation.
- Refrigerant**
Conventional refrigerant HFCs (R134A, R404A, R507) and so on.
New refrigerant HFOs (R1234ze) and so on.

卓越的特性

- 可变频化**
变频机型调速简单，可实现软启动和平稳停机。
- 能效**
高精度加工件，高精度轴承，先进的螺杆型线等确保压缩机高效能。
- 机体结构**
机体设计合理，结构紧凑，使用占用空间小。
- 静音**
合理的气流布局，螺杆转动平稳，压缩机运转时低振动、低噪音。
- 应用领域广泛**
"适合应用于：工业制冷、船舶制冷、冷冻冷藏、冷冻干燥机、制冰机、烘干设备、采暖系统、食品速冻等。"
- 品质保障**
所有制冷压缩机产品均经过测试，安装后即可使用。
- 制冷剂**
常规制冷剂HFCs(R134a、R404A、R507)等。
新型制冷剂HFOs(R1234ze)等。

ASERCOM认证的参数

欧洲制冷压缩机及控制生产厂商协会 (ASERCOM) 已经实施了压缩机性能参数的认证程序

此认证的高标准靠以下措施保证:

- 专家检验认证参数的可靠性
- 由独立机构随机抽检

这样的高要求导致只有有限的压缩机能够被提交检验, 通过ASERCOM认证的压缩机可以贴上“ASERCOM认证的产品”的标签, 所有获得认证的压缩机及其他信息见ASERCOM网站 (wWW.ASERCOM.org)

Type Designation

RFS - CW 6 5 5 3 - 3 0 Y

RefScrew Brand

RFS - CW 6 5 5 3 - 3 0 Y

Semi-hermetic compact screw compressor

RFS - CW 6 5 5 3 - 3 0 Y

Version for low condensing temperatures

RFS - CW 6 5 5 3 - 3 0 Y

Product code

RFS - CW 6 5 5 3 - 3 0 Y

Code for motor size

RFS - CW 6 5 5 3 - 3 0 Y

Oil charge(polyol-ester)

型号说明

RFS - CW 6 5 5 3 - 3 0 Y

RefScrew品牌

RFS - CW 6 5 5 3 - 3 0 Y

半封闭式紧凑型螺杆压缩机

RFS - CW 6 5 5 3 - 3 0 Y

低冷凝温度工况应用型号

RFS - CW 6 5 5 3 - 3 0 Y

产品代码

RFS - CW 6 5 5 3 - 3 0 Y

电机功率代码

RFS - CW 6 5 5 3 - 3 0 Y

R134a用酯类润滑油

Technical Data 技术参数

RFS-CW Series

Model 压缩机型号	Dispalcement 设计排气量 (50Hz) m³/h	Speed 转速 (50Hz) RMP	Partial Load 部分 负载	Starting Mode 启动 方式	Motor Connection 电源 种类	Motor Form 电机 型式	Motor Protection Mode 电机保护 方式	Nominal Power 额定功率 HP	Max Working Current 最大运转 电流 A	Oil Supply Mode 供油方式	*Oil Flow 油流量 L/min
RFS-CW6553-30Y	140	2950	33, 66, 100	Y-Δ	380V/50Hz	Three phase ambipolar Asynchronous machine	PTC Protection PTC保护	30	52	Differential pressure fuel supply 压差式供油	12
RFS-CW6553-40Y	179							35	60		12
RFS-CW6583-40Y	202							40	67		14
RFS-CW7573-60Y	255							50	86		14
RFS-CW7583-70Y	310							60	94		16
RFS-CW7593-80Y	336							70	110		16
RFS-CW8573-90Y	410		25, 50, 75, 100		440V/60Hz	Insulation grade: F 3相2极 异步电机 F级绝缘	80	125	16		
RFS-CW8573-100Y	440						85	133	16		
RFS-CW8583-110Y	470						90	141	20		
RFS-CW8593-120Y	510						100	156	20		
RFS-CW8593-125Y	550						110	172	20		
RFS-CW9563-140Y	618						120	186	22		
RFS-CW9573-150Y	656						130	203	22		
RFS-CW9573-160Y	710						140	219	22		

RFS-CVW Series

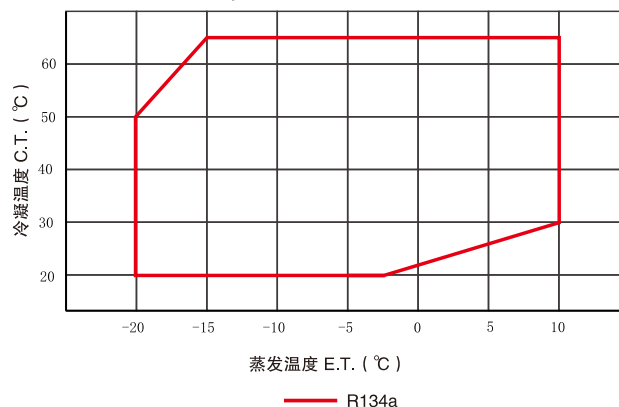
Model 压缩机型号	Dispalcement 设计排气量 (50Hz) m³/h	Frequency Conversion Range 变频范围 Hz	Speed 转速 (50Hz) RMP	Motor Connection 电源 种类	Motor Form 电机 型式	Motor Protection Mode 电机保护 方式	Nominal Power 额定功率 HP	Max Working Current 最大运转 电流 A	Oil Supply Mode 供油方式	*Oil Flow 油流量 L/min
RFS-CVW24-60MY	268	25~75	1500~4500	380V/50Hz	Permanent magnet synchronous motor Insulation grade: F 永磁同步电机, F级绝缘	PTC Protection PTC保护	50	86	Differential pressure fuel supply 压差式供油	16
RFS-CVW24-100MY	382						75	118		20
RFS-CVW24-125MY	504						100	156		25
RFS-CVW25-160MY	660						130	203		28
RFS-CVW26-200MY	825						160	251		32
RFS-CVW37-240Y	1065						210	328		36

*:The standard configuration comes with oil. The models in this table are mainly used in air conditioning conditions. The default refrigerant is R134a

*:标准配置自带油分，本表机型主要应用于空调工况，默认使用R134a冷媒

Application Limits 应用范围

机型 RFS-CW/CVW



Performance Data 50Hz

Suction gas superheat: 10°C

Liquid subcooling: 0°C

50Hz时的性能参数

吸气过热为10°C

液体过冷为0°C

High-Medium Temperature Range											空调/冷水机组																			
Compressor Type 压缩机型号	Ewapo. Temp. 蒸发温度 °C	Cooling Capacity Qo [kW] 制冷量										Power Consumption Pe [kW] 输入功率																		
		Condensing Temperature										冷凝温度°C																		
		20	25	30	35	40	45	50	55	60	20	25	30	35	40	45	50	55	60											
RFS-CW6553-30Y	-20	37.6	35.2	33.7	29.9	28.0	24.5	22.2													12.3	12.9	13.7	15.0	16.7	18.1	20.5			
	-15	47.4	44.9	42.0	39.1	35.9	32.8	30.1	26.1	22.0												12.8	13.5	14.5	15.4	17.6	19.1	21.0	23.1	26.8
	-10	59.1	56.0	53.6	49.5	46.0	43.2	38.4	34.2	30.3												13.1	13.9	14.9	16.0	17.9	19.6	22.1	24.3	27.5
	-5	73.1	69.4	65.7	62.1	59.2	54.3	50.2	44.4	39.5												13.3	14.2	15.3	16.7	18.5	20.3	22.6	25.5	28.5
	0		85.3	80.9	77.3	73.5	68.6	63.5	57.1	51.6													14.8	15.6	17.1	19.1	21.2	23.3	25.9	29.1
	5		104.0	98.7	95.5	91.8	84.9	77.9	71.0	64.3													15.0	16.1	17.7	19.5	21.7	23.8	26.6	29.5
	10			119.8	115.9	108.4	102.2	94.8	87.6	80.5														16.5	17.9	19.9	22.2	24.7	27.1	30.4
RFS-CW6553-40Y	-20	48.3	45.2	43.2	38.4	36.0	31.5	28.5														15.8	16.5	17.5	19.2	21.3	23.1	26.3		
	-15	60.8	57.6	53.9	50.2	46.1	42.0	38.7	33.5	28.2												16.3	17.3	18.5	19.7	22.5	24.4	26.9	29.6	34.3
	-10	75.8	71.9	68.9	63.5	59.1	55.4	49.2	44.0	38.9												16.8	17.8	19.0	20.4	22.9	25.1	28.3	31.1	35.2
	-5	93.8	89.1	84.4	79.7	76.0	69.7	64.4	57.1	50.7												17.0	18.2	19.5	21.3	23.6	26.0	28.9	32.6	36.4
	0		109.5	103.8	99.3	94.4	88.0	81.5	73.3	66.3													18.9	20.0	21.9	24.4	27.1	29.8	33.1	37.2
	5		133.6	126.8	122.6	117.9	109.0	99.9	91.2	82.6													19.1	20.6	22.7	25.0	27.7	30.5	34.0	37.7
	10			153.8	148.8	139.2	131.1	121.7	112.5	103.4														21.1	22.9	25.4	28.4	31.6	34.7	38.8
RFS-CW6583-40Y	-20	54.9	51.4	49.1	43.6	40.9	35.8	32.4														17.7	18.6	19.7	21.6	23.9	25.9	29.5		
	-15	69.1	65.5	61.2	57.1	52.3	47.8	43.9	38.1	32.0												18.3	19.4	20.8	22.2	25.2	27.4	30.2	33.2	38.5
	-10	86.2	81.8	78.2	72.2	67.2	63.0	56.0	50.0	44.2												18.8	20.0	21.4	22.9	25.8	28.2	31.8	34.9	39.5
	-5	106.6	101.2	95.9	90.6	86.3	79.2	73.2	64.8	57.7												19.1	20.4	21.9	24.0	26.5	29.1	32.5	36.5	40.9
	0		124.4	118.0	112.8	106.4	100.0	92.6	83.3	75.3													21.3	22.4	24.6	27.4	30.5	33.5	37.2	41.8
	5		151.8	144.1	139.3	131.6	123.9	113.6	103.6	93.9													21.5	23.2	25.4	28.0	31.1	34.2	38.2	42.3
	10			174.7	169.1	158.2	149.0	138.4	127.9	117.5													23.7	25.7	28.6	31.9	35.5	38.9	43.6	

Performance Data 50Hz

Suction gas superheat: 10°C

Liquid subcooling: 0°C

50Hz时的性能参数

吸气过热为10°C

液体过冷为0°C

High-Medium Temperature Range										空调/冷水机组											
Compressor Type 压缩机型号	Ewapo. Temp. 蒸发温度 °C	Cooling Capacity Qo [kW] 制冷量										Power Consumption Pe [kW] 输入功率									
		Condensing Temperature 冷凝温度°C										冷凝温度°C									
		20	25	30	35	40	45	50	55	60	20	25	30	35	40	45	50	55	60		
RFS-CW7573-60Y	-20	69.3	64.9	62.0	55.0	51.6	45.2	40.9			22.5	23.6	25.0	27.4	30.3	32.9	37.4				
	-15	87.2	82.7	77.3	72.0	66.1	60.3	55.5	48.0	40.4	23.2	24.6	26.3	28.1	32.0	34.8	38.3	42.1	48.8		
	-10	108.8	103.2	98.8	91.2	84.8	79.5	70.6	63.1	55.8	23.9	25.3	27.1	29.1	32.7	35.7	40.3	44.2	50.1		
	-5	134.6	127.8	121.1	114.4	109.0	100.0	92.4	81.9	72.8	24.2	25.9	27.8	30.4	33.7	37.0	41.2	46.4	51.9		
	0		157.0	148.9	142.4	135.4	126.3	116.9	105.2	95.1		27.0	28.4	31.2	34.7	38.6	42.4	47.1	53.0		
	5		191.6	181.9	175.9	169.1	156.3	143.4	130.8	118.5		27.3	29.4	32.3	35.6	39.4	43.4	48.4	53.7		
	10			220.6	213.5	199.7	188.1	174.7	161.4	148.3			30.1	32.7	36.2	40.5	45.0	49.4	55.3		
RFS-CW7583-70Y	-20	83.8	78.5	75.0	66.6	62.4	54.7	49.4			27.3	28.6	30.4	33.3	36.9	40.0	45.5				
	-15	105.5	100.0	93.5	87.1	79.9	73.0	67.1	58.1	48.9	28.2	29.9	32.0	34.2	38.9	42.3	46.5	51.2	59.3		
	-10	131.6	124.9	119.5	110.3	102.6	96.1	85.4	76.3	67.5	29.0	30.8	33.0	35.4	39.7	43.5	49.0	53.8	61.0		
	-5	162.8	154.6	146.5	138.4	131.8	121.0	111.8	99.0	88.0	29.4	31.5	33.8	36.9	40.9	45.0	50.1	56.4	63.1		
	0		190.0	180.1	172.2	162.5	152.7	141.4	127.2	115.0		32.8	34.6	37.9	42.2	47.0	51.6	57.3	64.5		
	5		231.8	220.0	212.8	200.9	189.1	173.4	158.2	143.3		33.2	35.7	39.2	43.2	48.0	52.8	58.9	65.2		
	10			266.8	258.3	241.5	227.6	211.3	195.2	179.4			36.6	39.7	44.0	49.2	54.7	60.1	67.3		
RFS-CW7593-80Y	-20	90.4	84.7	80.9	71.8	67.3	59.0	53.3			29.5	30.9	32.7	35.9	39.8	43.1	49.1				
	-15	113.8	107.9	100.8	94.0	86.2	78.7	72.4	62.7	52.8	30.4	32.3	34.5	36.9	42.0	45.6	50.2	55.2	64.0		
	-10	141.9	134.7	128.9	118.9	110.6	103.7	92.2	82.3	72.8	31.3	33.2	35.6	38.2	42.8	46.9	52.9	58.0	65.7		
	-5	175.6	166.7	157.9	149.2	142.2	130.5	120.6	106.8	94.9	31.8	34.0	36.5	39.8	44.2	48.5	54.0	60.8	68.1		
	0		204.9	194.3	185.8	175.2	164.7	152.5	137.2	124.0		35.4	37.3	40.9	45.5	50.7	55.7	61.8	69.5		
	5		250.0	237.2	229.5	216.7	204.0	187.0	170.6	154.6		35.8	38.5	42.3	46.6	51.7	57.0	63.5	70.4		
	10			287.8	278.5	260.5	245.4	227.9	210.5	193.5			39.5	42.8	47.5	53.1	59.0	64.8	72.5		

Performance Data 50Hz

Suction gas superheat: 10°C

Liquid subcooling: 0°C

50Hz时的性能参数

吸气过热为10°C

液体过冷为0°C

High-Medium Temperature Range											空调/冷水机组										
Compressor Type 压缩机型号	Evapo. Temp. 蒸发温度 °C	Cooling Capacity Qo [kW] 制冷量									Power Consumption Pe [kW] 输入功率										
		Condensing Temperature										冷凝温度°C									
		20	25	30	35	40	45	50	55	60	20	25	30	35	40	45	50	55	60		
RFS-CW8573-90Y	-20	110.9	103.8	99.2	88.0	82.6	72.3	65.4			36.0	37.7	39.9	43.8	48.5	52.6	59.9				
	-15	139.5	132.3	123.7	115.2	105.7	96.5	88.7	76.9	64.7	37.2	39.4	42.2	45.0	51.2	55.7	61.2	67.3	78.1		
	-10	174.1	165.1	158.0	145.9	135.6	127.1	113.0	100.9	89.3	38.2	40.5	43.4	46.6	52.3	57.2	64.5	70.8	80.2		
	-5	215.3	204.5	193.7	183.0	174.3	160.0	147.8	131.0	116.4	38.8	41.5	44.5	48.6	53.9	59.2	65.9	74.2	83.1		
	0		251.3	238.2	227.8	214.9	202.0	187.0	168.2	152.1		43.1	45.5	49.9	55.6	61.8	67.9	75.4	84.8		
	5		306.6	290.9	281.4	265.7	250.1	229.4	209.2	189.6		43.6	47.0	51.6	56.9	63.1	69.5	77.5	85.9		
	10			352.9	341.6	319.5	301.0	279.4	258.2	237.3			48.2	52.3	58.0	64.8	72.0	79.0	88.5		
RFS-CW8573-100Y	-20	119.6	112.0	107.0	94.9	89.0	78.0	70.5			38.6	40.4	42.9	47.0	52.1	56.5	64.3				
	-15	150.5	142.7	133.4	124.3	114.0	104.1	95.7	82.9	69.8	39.9	42.2	45.2	48.3	54.9	59.8	65.7	72.3	83.8		
	-10	187.7	178.1	170.4	157.3	146.3	137.1	121.9	108.8	96.3	41.0	43.5	46.6	50.0	56.1	61.4	69.2	76.0	86.1		
	-5	232.2	220.5	208.9	197.4	190.1	172.6	159.5	141.3	125.6	41.6	44.5	47.7	52.2	57.8	63.5	70.7	79.6	89.1		
	0		271.0	257.0	245.7	234.7	217.8	201.7	181.5	164.0		46.3	48.8	53.6	59.6	66.3	72.9	80.9	91.0		
	5		330.6	313.8	303.5	296.6	269.8	247.4	225.6	204.5		46.8	50.5	55.4	61.1	67.7	74.6	83.2	92.1		
	10			380.6	368.4	344.5	324.6	301.4	278.5	255.9			51.7	56.1	62.2	69.5	77.2	84.8	95.0		
RFS-CW8583-110Y	-20	127.1	119.0	113.7	100.9	94.6	82.9	74.9			41.0	43.0	45.6	50.0	55.4	60.0	68.3				
	-15	160.0	151.6	141.8	132.1	121.2	110.6	101.7	88.1	74.2	42.4	44.9	48.1	51.3	58.4	63.5	69.8	76.8	89.0		
	-10	199.5	189.3	181.2	167.2	155.5	145.8	129.6	115.7	102.4	43.6	46.2	49.5	53.1	59.6	65.2	73.6	80.7	91.5		
	-5	246.8	234.4	222.0	209.8	199.9	183.5	169.5	150.1	133.5	44.2	47.3	50.7	55.5	61.5	67.5	75.1	84.6	94.7		
	0		288.0	273.1	261.1	246.3	231.5	214.4	192.9	174.3		49.2	51.9	56.9	63.4	70.5	77.5	86.0	96.8		
	5		351.4	333.5	322.6	304.6	286.7	263.0	239.8	217.3		49.8	53.6	58.9	64.9	72.0	79.3	88.4	97.9		
	10			404.6	391.6	366.2	345.0	320.3	296.0	272.0			54.9	59.6	66.1	73.9	82.1	90.2	100.9		

Performance Data 50Hz

Suction gas superheat: 10°C

Liquid subcooling: 0°C

50Hz时的性能参数

吸气过热为10°C

液体过冷为0°C

High-Medium Temperature Range										空调/冷水机组									
Compressor Type 压缩机型号	Ewapo. Temp. 蒸发温度 °C	Cooling Capacity 制冷量 Qo [kW]									Power Consumption 输入功率 Pe [kW]								
		Condensing Temperature										冷凝温度°C							
		20	25	30	35	40	45	50	55	60	20	25	30	35	40	45	50	55	60
RFS-CW8593-120Y	-20	137.9	129.1	123.4	109.5	102.7	90.0	81.3			44.3	46.4	49.2	54.0	59.8	64.8	73.7		
	-15	173.6	164.5	153.8	143.3	131.5	120.0	110.4	95.6	80.5	45.8	48.5	51.9	55.4	63.1	68.6	75.4	82.9	96.1
	-10	216.5	205.4	196.6	181.4	168.7	158.2	140.6	125.5	111.1	47.1	49.9	53.4	57.4	64.4	70.4	79.4	87.2	98.8
	-5	267.8	254.3	240.9	227.7	216.9	199.1	183.9	162.9	144.8	47.7	51.1	54.8	59.9	66.4	72.9	81.1	91.4	102.3
	0		312.5	296.4	283.4	267.3	251.3	232.6	209.3	189.2		53.1	56.0	61.5	68.4	76.1	83.6	92.9	104.5
	5		381.3	361.9	350.1	334.3	311.1	285.3	260.2	235.8		53.7	57.9	63.6	70.1	77.7	85.6	95.4	105.7
	10			439.0	424.9	397.4	374.4	347.6	321.2	295.2			59.3	64.4	71.4	79.8	88.6	97.4	109.0
RFS-CW8593-125Y	-20	148.7	139.3	133.0	118.1	110.8	97.0	87.7			47.8	50.1	53.0	58.2	64.5	69.9	79.5		
	-15	187.2	177.4	165.9	154.6	141.8	129.5	119.0	103.1	86.8	49.3	52.3	56.0	59.8	68.0	74.0	81.3	89.4	103.7
	-10	233.5	221.5	212.0	195.7	182.0	170.6	151.6	135.4	119.8	50.8	53.8	57.6	61.8	69.4	76.0	85.7	94.0	106.6
	-5	288.8	274.3	259.8	245.5	233.9	214.7	198.3	175.7	156.2	51.5	55.1	59.1	64.6	71.6	78.6	87.5	98.5	110.3
	0		337.1	319.6	305.6	288.2	271.0	250.9	225.7	204.0		57.3	60.4	66.3	73.8	82.1	90.2	100.2	112.7
	5		411.2	390.3	377.5	360.5	335.6	307.7	280.7	254.3		58.0	62.5	68.6	75.6	83.8	92.3	102.9	114.0
	10			473.4	458.2	428.5	403.8	374.9	346.4	318.3			64.0	69.4	77.0	86.1	95.6	105.0	117.5
RFS-CW9563-125Y	-20	168.0	157.3	150.2	133.4	125.1	109.5	99.0			53.7	56.2	59.6	65.4	72.4	78.5	89.4		
	-15	211.4	200.4	187.3	174.6	160.1	146.2	134.4	116.4	98.0	55.4	58.7	62.9	67.2	76.4	83.1	91.3	100.5	98.0
	-10	263.7	250.2	239.4	221.0	205.5	192.6	171.2	152.8	135.3	57.0	60.5	64.7	69.5	78.0	85.3	96.2	105.6	135.3
	-5	326.2	309.7	293.4	277.2	264.1	242.5	224.0	198.4	176.4	57.8	61.9	66.4	72.6	80.4	88.3	98.3	110.7	176.4
	0		380.6	360.9	345.1	325.5	306.0	283.3	254.9	230.4		64.4	67.9	74.5	82.9	92.3	101.3	112.6	230.4
	5		464.4	440.7	426.3	402.6	378.9	347.5	316.9	287.2		65.1	70.2	77.1	84.9	94.2	103.7	115.6	287.2
	10			534.6	517.5	483.9	456.0	423.3	391.2	359.4			71.9	78.0	86.5	96.7	107.4	118.0	359.4

Performance Data 50Hz

Suction gas superheat: 10°C

Liquid subcooling: 0°C

50Hz时的性能参数

吸气过热为10°C

液体过冷为0°C

High-Medium Temperature Range										空调/冷水机组									
Compressor Type 压缩机型号	Evapo. Temp. 蒸发温度 °C	Cooling Capacity 制冷量 Qo [kW]									Power Consumption 输入功率 Pe [kW]								
		Condensing Temperature										冷凝温度°C							
		20	25	30	35	40	45	50	55	60	20	25	30	35	40	45	50	55	60
RFS-CW9573-150Y	-20	178.1	166.7	159.3	141.4	132.6	116.1	105.0			56.7	59.4	63.0	69.1	76.6	83.0	94.5		
	-15	224.1	212.4	198.6	185.1	169.8	155.0	142.5	123.4	103.9	58.6	62.1	66.5	71.0	80.8	87.8	96.6	106.2	123.1
	-10	279.5	265.2	253.8	234.2	217.9	204.2	181.5	162.0	143.4	60.3	64.0	68.4	73.5	82.5	90.2	101.7	111.7	126.6
	-5	345.8	328.4	311.1	293.9	280.0	257.0	237.4	210.3	187.0	61.1	65.4	70.2	76.7	85.0	93.3	103.9	117.0	131.0
	0		403.5	382.6	365.9	345.1	324.4	300.3	270.2	244.3		68.1	71.8	78.7	87.6	97.5	107.1	119.0	133.8
	5		492.3	467.3	452.0	426.8	401.7	368.4	336.0	304.5		68.8	74.2	81.4	89.7	99.5	109.6	122.2	135.4
	10			566.8	548.6	513.0	483.4	448.8	414.7	381.1			76.0	82.4	91.4	102.2	113.5	124.7	139.6
RFS-CW9573-160Y	-20	192.7	180.5	172.4	153.0	143.5	125.7	113.6			61.4	64.3	68.2	74.8	82.9	89.8	102.2		
	-15	242.6	229.9	214.9	200.3	183.7	167.8	154.3	133.6	112.5	63.4	67.2	72.0	76.8	87.4	95.1	104.5	115.0	133.3
	-10	302.5	287.0	274.7	253.5	235.8	221.0	196.4	175.4	155.2	65.3	69.2	74.1	79.5	89.2	97.6	110.1	120.9	137.0
	-5	374.3	355.4	336.7	318.1	303.0	278.2	257.0	227.6	202.4	66.2	70.8	76.0	83.0	92.0	101.0	112.5	126.7	141.8
	0		436.7	414.1	396.0	373.5	351.1	325.0	292.5	264.4		73.7	77.7	85.2	94.9	105.5	115.9	128.8	144.8
	5		532.9	505.7	489.2	461.9	434.8	398.7	363.7	329.5		74.5	80.3	88.1	97.1	107.7	118.6	132.3	146.6
	10			613.4	593.8	555.3	523.2	485.7	448.8	412.4			82.2	89.2	99.0	110.6	122.8	135.0	151.1

Lubricants

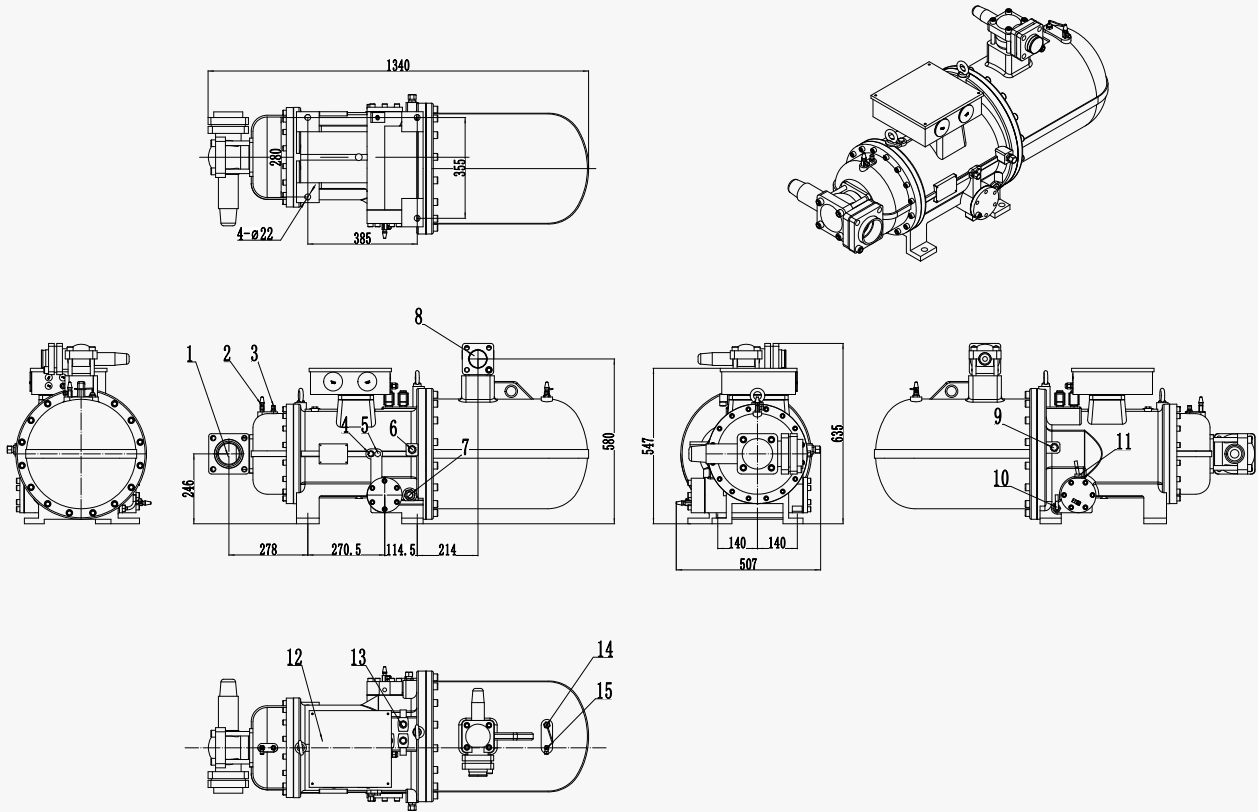
润滑油

	R22		R404A/R507		R134a/R407C	
	Lubricants Model	润滑油型号	Lubricants Model	润滑油型号	Lubricants Model	润滑油型号
	R25	R34	R12	R13	R12	R14
Viscosity 粘度 cst@40°C	96.5	168	127.7	175.2	127.7	233.3
Viscosity 粘度 cst@100°C	8.12	20.2	12.7	16.5	12.7	18.4
Specific Gravity 比重(15°C)	0.925	1.01	0.951	0.953	0.951	0.955
Pour Point 倾点(°C)	-25	-43	-33	-30	-33	-27
Point Of Flammability 闪点(°C)	188	290	251	265	251	268
Lgnition Point 燃点(°C)	/	332	271	287	271	287
Dielectric Strength 介电强度(KV)	50	42	47	46.6	47	41.8

Dimensional Drawings

外形尺寸图

RFS-CW6553-30/40Y



Connection Positions

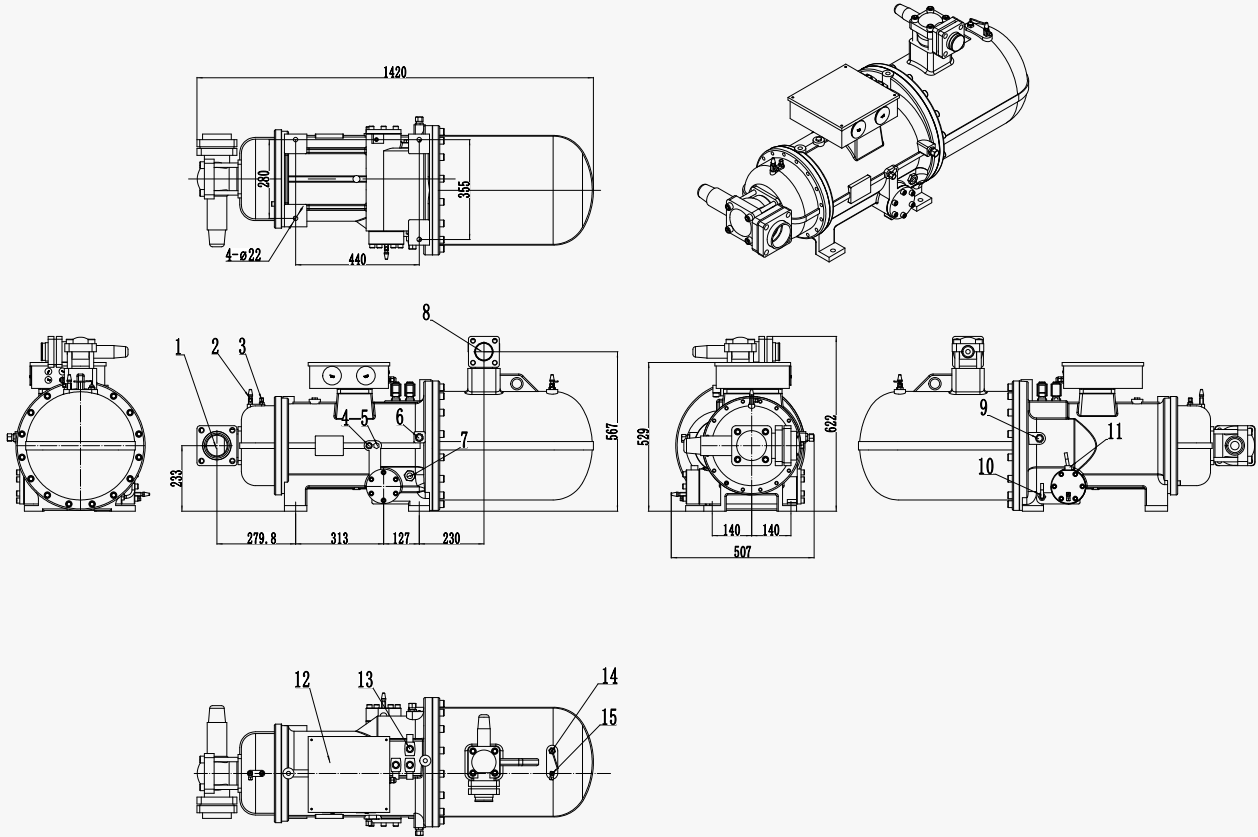
接口位置

1 Suction Shutoff Valve	吸气关断阀	3-1/8" φ 65
2 Suction Side Angle Valve	吸气侧角阀	SAE 1/4"
3 Check Joint	止回接头	SAE 1/4"
4 Outer Oil Supply Joint	外供油接头	SAE 3/8"
5 Outer Oil Supply	外供油塞头	NPT 3/8"
6 Spray Joint	喷液接头	SAE 3/8"
7 Oil Sight Glass	视油镜	1-1/8"-18UNEF
8 Exhaust Shutoff Valve	排气关断阀	2-5/8"- φ 42
9 Economizer Connector	经济器接头	SAE 1/2"
10 Oil Heaters	油加热器	220V/300W
11 Liquid Level Switch	液位开关	Normal on-type 常态接通型
12 Junction Box	接线盒	Wiring hole 接线孔 φ 60
13 Solenoid Valve	电磁阀	220V/50Hz/NC
14 Temperature Sensor	温度传感器	PTC
15 Exhaust side Angle Valve	排气侧角阀	SAE 1/4"

Dimensional Drawings

外形尺寸图

RFS-CW6583-40Y/CW7573-60Y



Connection Positions

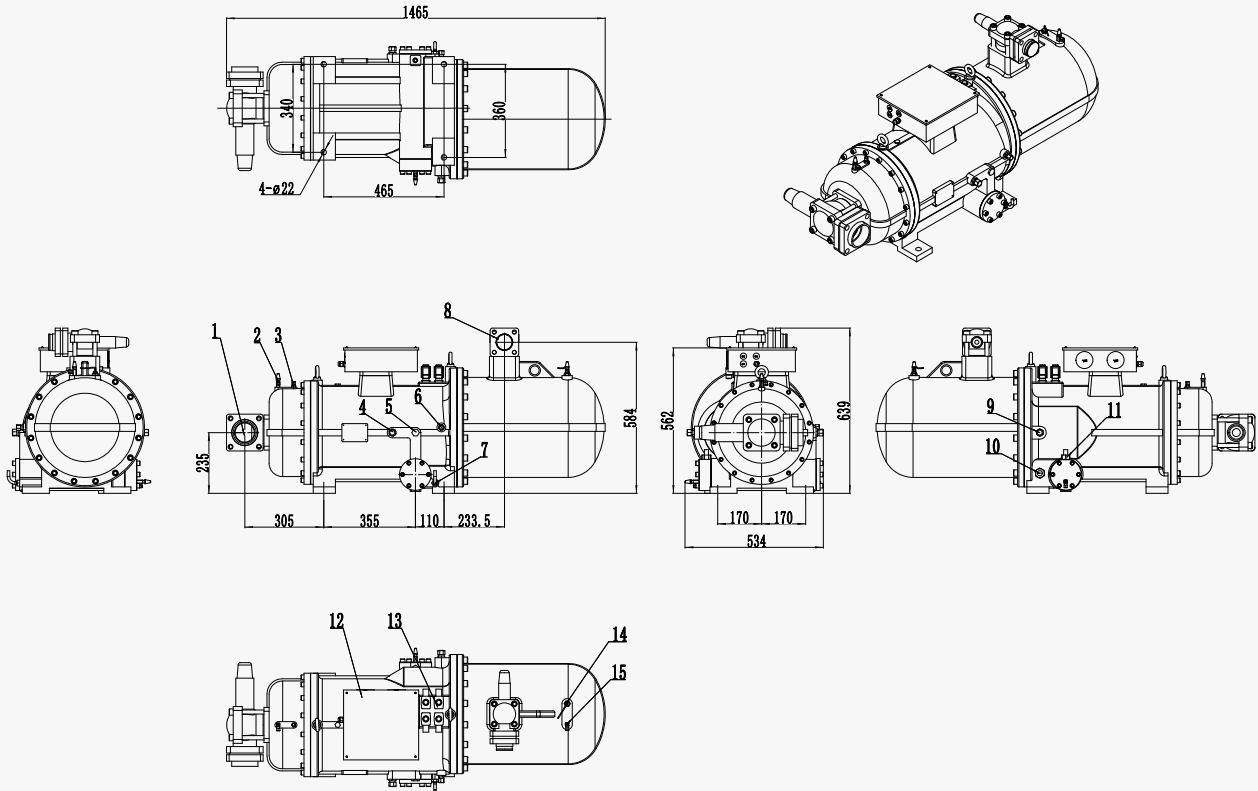
接口位置

1 Suction Shutoff Valve	吸气关断阀	3-1/8" φ 65
2 Suction Side Angle Valve	吸气侧角阀	SAE 1/4"
3 Check Joint	止回接头	SAE 1/4"
4 Outer Oil Supply Joint	外供油接头	SAE 3/8"
5 Outer Oil Supply	外供油塞头	NPT 3/8"
6 Spray Joint	喷液接头	SAE 3/8"
7 Oil Sight Glass	视油镜	1-1/8"-18UNEF
8 Exhaust Shutoff Valve	排气关断阀	2-5/8"- φ 42
9 Economizer Connector	经济器接头	SAE 1/2"
10 Oil Heaters	油加热器	220V/300W
11 Liquid Level Switch	液位开关	Normal on-type 常态接通型
12 Junction Box	接线盒	Wiring hole 接线孔 φ 60
13 Solenoid Valve	电磁阀	220V/50Hz/NC
14 Temperature Sensor	温度传感器	PTC
15 Exhaust side Angle Valve	排气侧角阀	SAE 1/4"

Dimensional Drawings

外形尺寸图

RFS-CW7583-70Y/CW7593-80Y



Connection Positions

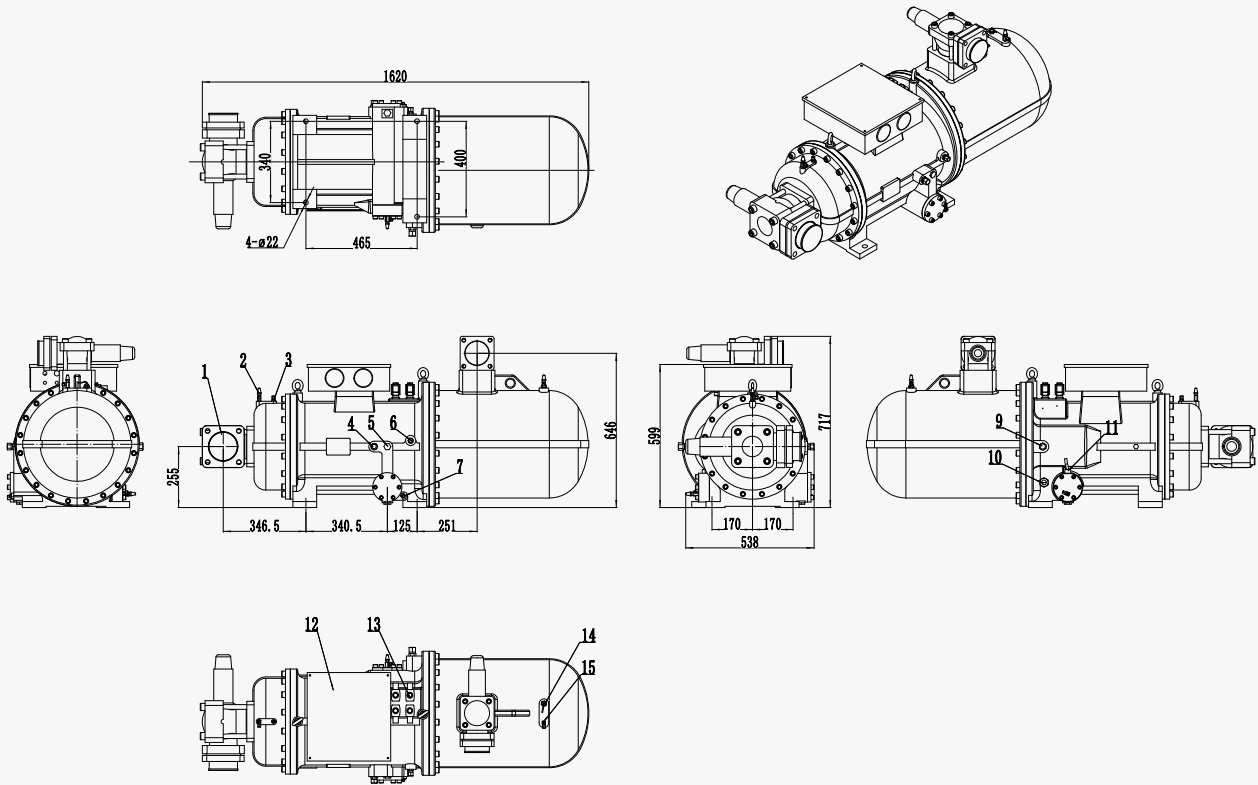
接口位置

1 Suction Shutoff Valve	吸气关断阀	3-1/8" φ 81
2 Suction Side Angle Valve	吸气侧角阀	SAE 1/4"
3 Check Joint	止回接头	SAE 1/4"
4 Outer Oil Supply Joint	外供油接头	SAE 1/2"
5 Outer Oil Supply	外供油塞头	NPT 3/8"
6 Spray Joint	喷液接头	SAE 3/8"
7 Oil Heaters	油加热器	220V/300W
8 Exhaust Shutoff Valve	排气关断阀	2-5/8"- φ 65
9 Economizer Connector	经济器接头	SAE 1/2"
10 Oil Sight Glass	视油镜	1-1/8"-18UNEF
11 Liquid Level Switch	液位开关	Normal on-type 常态接通型
12 Junction Box	接线盒	Wiring hole 接线孔 φ 60
13 Solenoid Valve	电磁阀	220V/50Hz/NC
14 Temperature Sensor	温度传感器	PTC
15 Exhaust side Angle Valve	排气侧角阀	SAE 1/4"

Dimensional Drawings

外形尺寸图

RFS-CW8573-90/100Y



Connection Positions

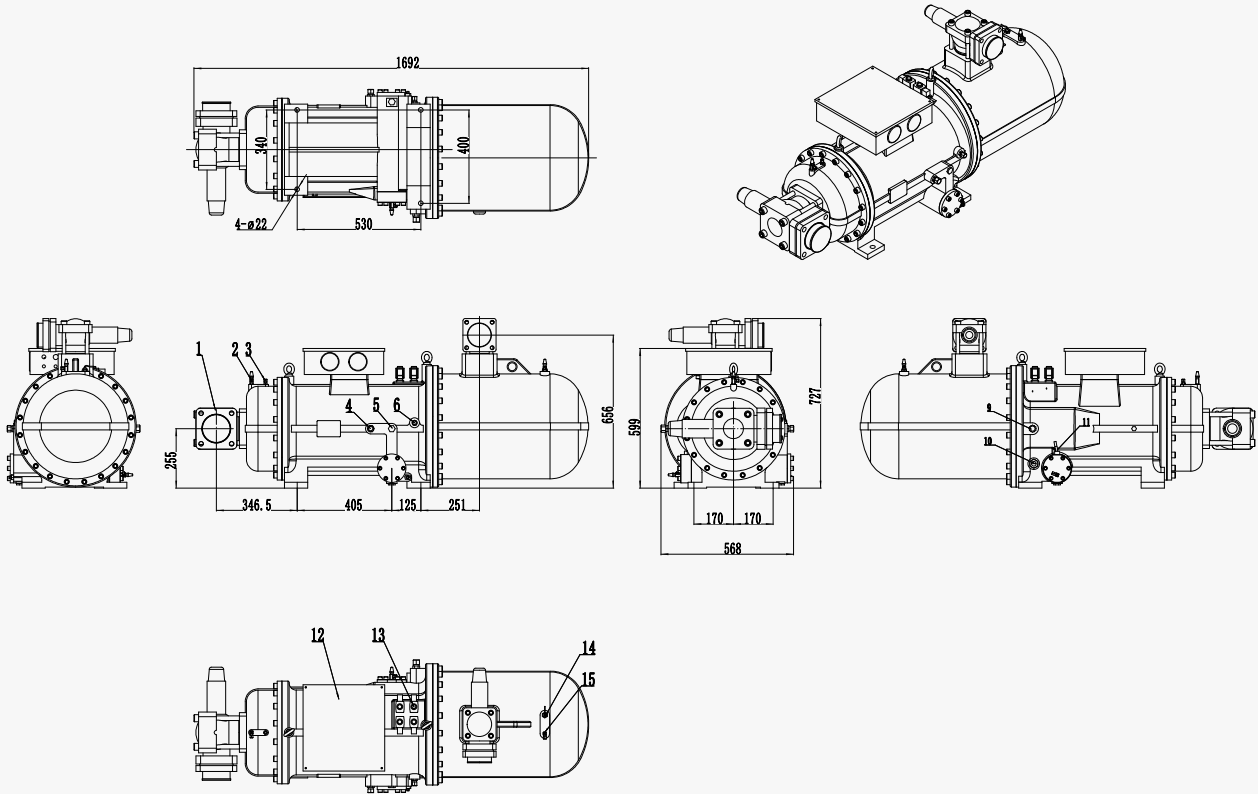
接口位置

1 Suction Shutoff Valve	吸气关断阀	4"- φ 105.5
2 Suction Side Angle Valve	吸气侧角阀	SAE 1/4"
3 Check Joint	止回接头	SAE 1/4"
4 Outer Oil Supply Joint	外供油接头	SAE 5/8"
5 Outer Oil Supply	外供油塞头	NPT 3/8"
6 Spray Joint	喷液接头	SAE 3/8"
7 Oil Heaters	油加热器	220V/300W
8 Exhaust Shutoff Valve	排气关断阀	3-1/8"- φ 81
9 Economizer Connector	经济器接头	SAE 1/2"
10 Oil Sight Glass	视油镜	1-1/8"-18UNEF
11 Liquid Level Switch	液位开关	Normal on-type 常态接通型
12 Junction Box	接线盒	Wiring hole 接线孔 φ 70
13 Solenoid Valve	电磁阀	220V/50Hz/NC
14 Temperature Sensor	温度传感器	PTC
15 Exhaust side Angle Valve	排气侧角阀	SAE 1/4"

Dimensional Drawings

外形尺寸图

RFS-CW8583-110Y
RFS-CW8593-120/125Y



Connection Positions

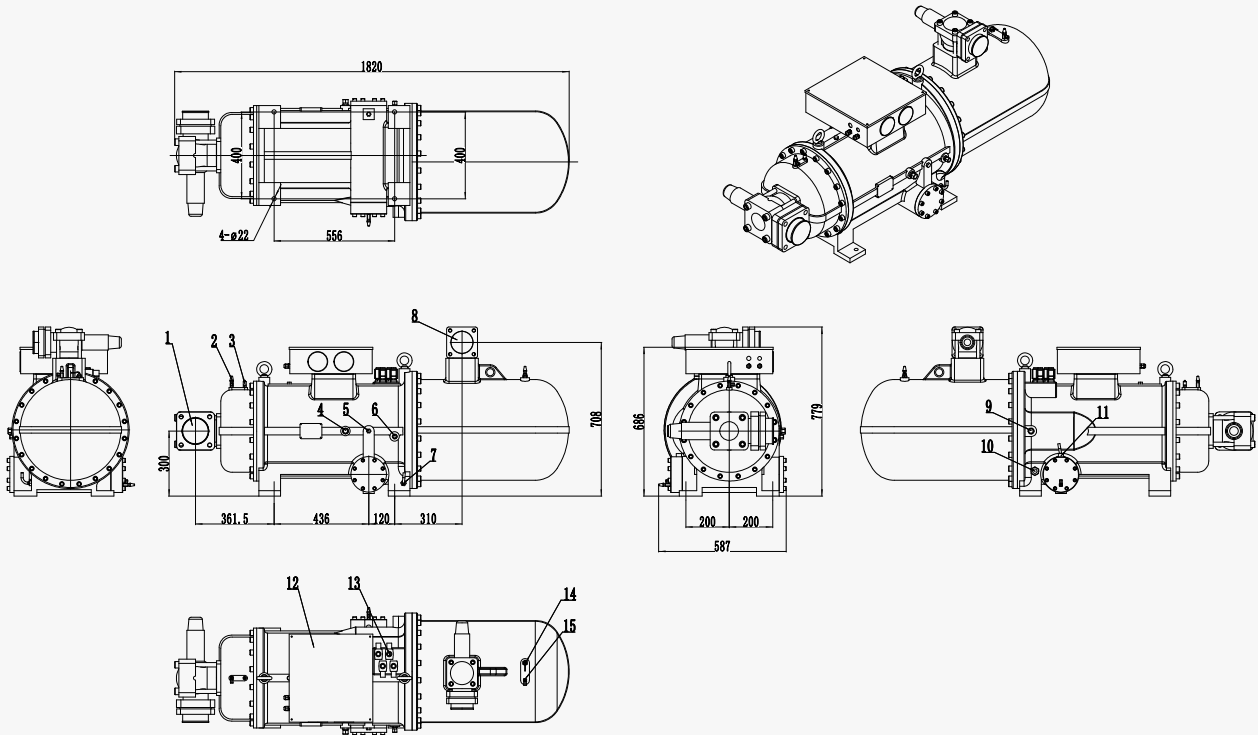
接口位置

1 Suction Shutoff Valve	吸气关断阀	4" - ϕ 105.5
2 Suction Side Angle Valve	吸气侧角阀	SAE 1/4"
3 Check Joint	止回接头	SAE 1/4"
4 Outer Oil Supply Joint	外供油接头	SAE 5/8"
5 Outer Oil Supply	外供油塞头	NPT 3/8"
6 Spray Joint	喷液接头	SAE 3/8"
7 Oil Heaters	油加热器	220V/300W
8 Exhaust Shutoff Valve	排气关断阀	3-1/8" - ϕ 81
9 Economizer Connector	经济器接头	SAE 1/2"
10 Oil Sight Glass	视油镜	1-1/8"-18UNEF
11 Liquid Level Switch	液位开关	Normal on-type 常态接通型
12 Junction Box	接线盒	Wiring hole 接线孔 ϕ 70
13 Solenoid Valve	电磁阀	220V/50Hz/NC
14 Temperature Sensor	温度传感器	PTC
15 Exhaust side Angle Valve	排气侧角阀	SAE 1/4"

Dimensional Drawings

外形尺寸图

RFS-CW9563-140Y
RFS-CW9573-150/160Y



Connection Positions

接口位置

1 Suction Shutoff Valve	吸气关断阀	4"- φ 105.5
2 Suction Side Angle Valve	吸气侧角阀	SAE 1/4"
3 Check Joint	止回接头	SAE 1/4"
4 Outer Oil Supply Joint	外供油接头	SAE 5/8"
5 Outer Oil Supply	外供油塞头	NPT 3/8"
6 Spray Joint	喷液接头	SAE 3/8"
7 Oil Heaters	油加热器	220V/300W
8 Exhaust Shutoff Valve	排气关断阀	3-1/8"- φ 81
9 Economizer Connector	经济器接头	SAE 1/2"
10 Oil Sight Glass	视油镜	1-1/8"-18UNEF
11 Liquid Level Switch	液位开关	Normal on-type 常态接通型
12 Junction Box	接线盒	Wiring hole 接线孔 φ 80
13 Solenoid Valve	电磁阀	220V/50Hz/NC
14 Temperature Sensor	温度传感器	PTC
15 Exhaust side Angle Valve	排气侧角阀	SAE 1/4"

Model Size

型号尺寸

Model 型号	Discharge Gas Line 排气口		Suction Gas Line 吸气口		Oil Supply Port 供油口
	Discharge Valve 排气阀	Nozzle Size 接管尺寸	Suction Valve 吸气阀	Nozzle Size 接管尺寸	
RFS-CW6553-30/40Y	2-5/8"	φ 42x3	3-1/8"	φ 65x3	φ 10
RFS-CW6583-40Y、RFS-CW7573-60Y	2-5/8"	φ 42x3	3-1/8"	φ 65x3	φ 10
RFS-CW7583-70Y、RFS-CW7593-80Y	2-5/8"	φ 65x3	3-1/8"	φ 81x4	φ 12
RFS-CW8573-90/100Y	3-1/8"	φ 81x4	4"	φ 105.5	φ 12
RFS-CW8583-110Y、RFS-CW8593-120/125Y	3-1/8"	φ 81x4	4"	φ 105.5	φ 12
RFS-CW9563-140Y、RFS-CW9573-150/160Y	3-1/8"	φ 81x4	4"	φ 105.5	φ 16

Accessories 配件

S:Standard Configuration

○:Selective Configuration

S:标准配置

○:选择配置

Accessories	配件名称	Description 配置说明
Suction Line Valve & Drivepipe	吸气截止阀+套管	S
Discharge Line Valve & Drivepipe	排气截止阀+套管	S
Discharge Check Valve	排气止回阀	S
Discharge Temperature Sensor	排气温度传感器(PTC)	S
Motor Coil Temperature Sensor	电机线圈温度传感器(PTC)	S
Compressor Protection Module	压缩机保护模块	S
Cushion Blocking	减振垫	S
Current Limiting Orifice Connector	限流孔口接头	○
External Oil Filter	外置油过滤器	○
Oil Differential Pressure Switch	油压差开关	○
Oil Circuit Solenoid Aalve	油路电磁阀	○
Special Refrigerant Oil	专用冷冻油	○



World Wide Sales Network
Servicing HVACR World



RefScrew Compressor Technology Co.,Ltd

ADD.: Suzhou City, Jiangsu Province, China. POBOX:215000

Tel.: 0086 574 87036954 Fax: 0086 574 87762810

Cell: 0086 13605887015

E-Mail: rfs@refscrew.com.cn

Web: www.refscrew.com.cn

